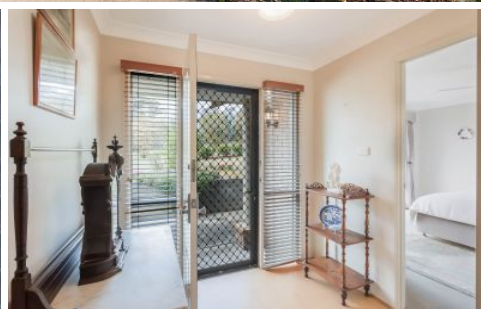
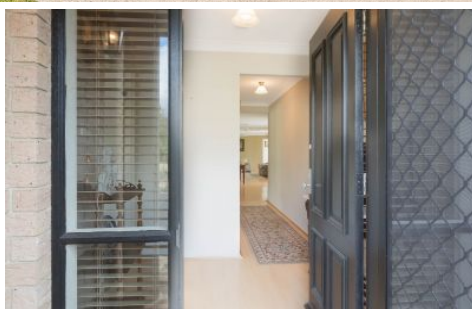




COAST PROPERTY GROUP
FAR SOUTH COAST



104 Cherry Lane Wolumla NSW

4 2 2

An elegant rural style setting with a sprawling 10 acres, this property embodies the very best of the "Golden Triangle" living between Merimbula's famous coastlines, the quaint Bega township village, and the beautiful Tathra seaside township.

Situated on a serene, leafy country lane, with completely sealed roads & driveway, this residence boasts spacious proportions and offers a remarkably relaxed ambiance, complete with a 10 x 10 metre Machinery workshop with polished concrete floors, power & lighting and a smaller garden shed with a lean-to and large dam.

The residence is perfectly positioned within picturesque, mature gardens and delicious fruit trees. Designed as a single-level dwelling with a thoughtful layout, the interior has plenty of natural light. With three large living spaces,

Type	: House
Price	: \$1,195,000
Building Size	: 172 sqm
Land Size	: 9.8 Acres
View	: https://www.coastpropertygroup.com.au/sale/nsw/far-south-coast/wolumla/residential/house/8073473



Tammy Carroll
02 6495 8440

[For full version visit the website](https://www.coastpropertygroup.com.au)

<https://www.coastpropertygroup.com.au>



104 Cherry Lane
WOLUMLA

Plan is not to scale.
Measurements are approximate and
should be used as a guide only.



COAST PROPERTY GROUP
FAR SOUTH COAST