



### 6/2 Wonga Street Merimbula NSW

4 🏠 2 🚗 1 🚗

Built in the 1980's the Magnificent double-brick "Isabella Tower Units" is a visual landmark from Park Street Merimbula. Beyond the captivating façade retaining all its retro - character, this triple-story townhouse and adjoining separate single-bedroom unit with dual access into the property provides an oasis of quality and flexibility - all in a prime location, moments from the buzz of the famous Market Street, Merimbula.

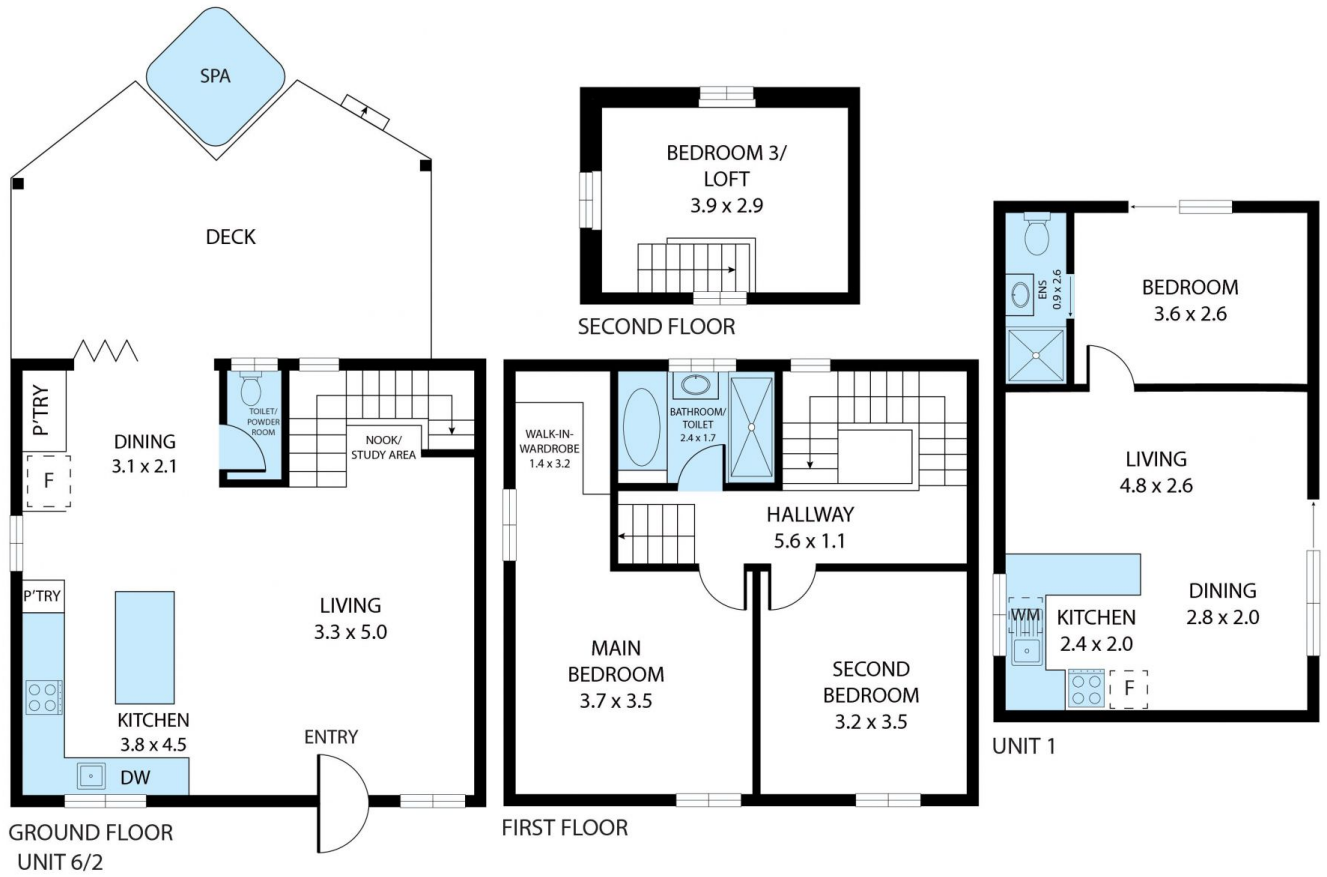
A wonderfully unique property, with extensive modern renovations, the home's light-filled interior comprises a lower-level open-plan kitchen/dining and living area, with stacker doors opening to an outdoor oasis featuring a large hardwood deck and covered patio. This level also contains a European-style laundry and a separate toilet/powder

[For full version visit the website](https://www.coastpropertygroup.com.au/sale/nsw/far-south-coast/merimbula/residential/unit/8068810)

**Type** : Unit  
**Price** : \$849,000  
**Building Size** : 103 sqm  
**View** : <https://www.coastpropertygroup.com.au/sale/nsw/far-south-coast/merimbula/residential/unit/8068810>



**Tammy Carroll**  
02 6495 8410



Unit 6/2 Wonga Street, Merimbula 2548  
 TOTAL APPROX. FLOOR AREA 140 SQ.M  
 Whilst every attempt has been made to ensure the accuracy of the floor plan contained here, measurements of doors, windows, rooms and any other items are approximate and no responsibility is taken for any error, omission, or misstatement. This plan is for illustrative purposes only and should be used as such by any prospective purchaser.